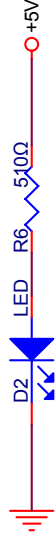


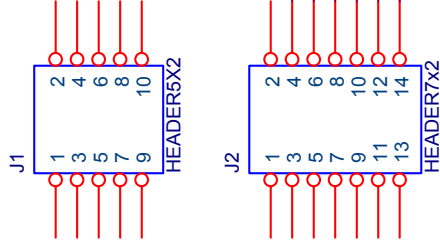
Ready LED

Note!! If the power is connected to 5V for Ready LED. The light-emitting diode will be a little luminous while it is turn off. We recommend connecting power to 3.3V to avoid this condition.



Power LED

MOXA HWDC	
Title	For NE-4120S
Size	Document Number
A	LED Display
Date:	星期四, 五月 20, 2004



Absolute Max. Ratings		Min.	Max.	Unit
V _{il}	Input Low Voltage		1.08	V
V _{ih}	Input High Voltage	2.1		V
V _{ol}	Output Low Voltage		0.4	V
V _{oh}	Output High Voltage	2.4		V

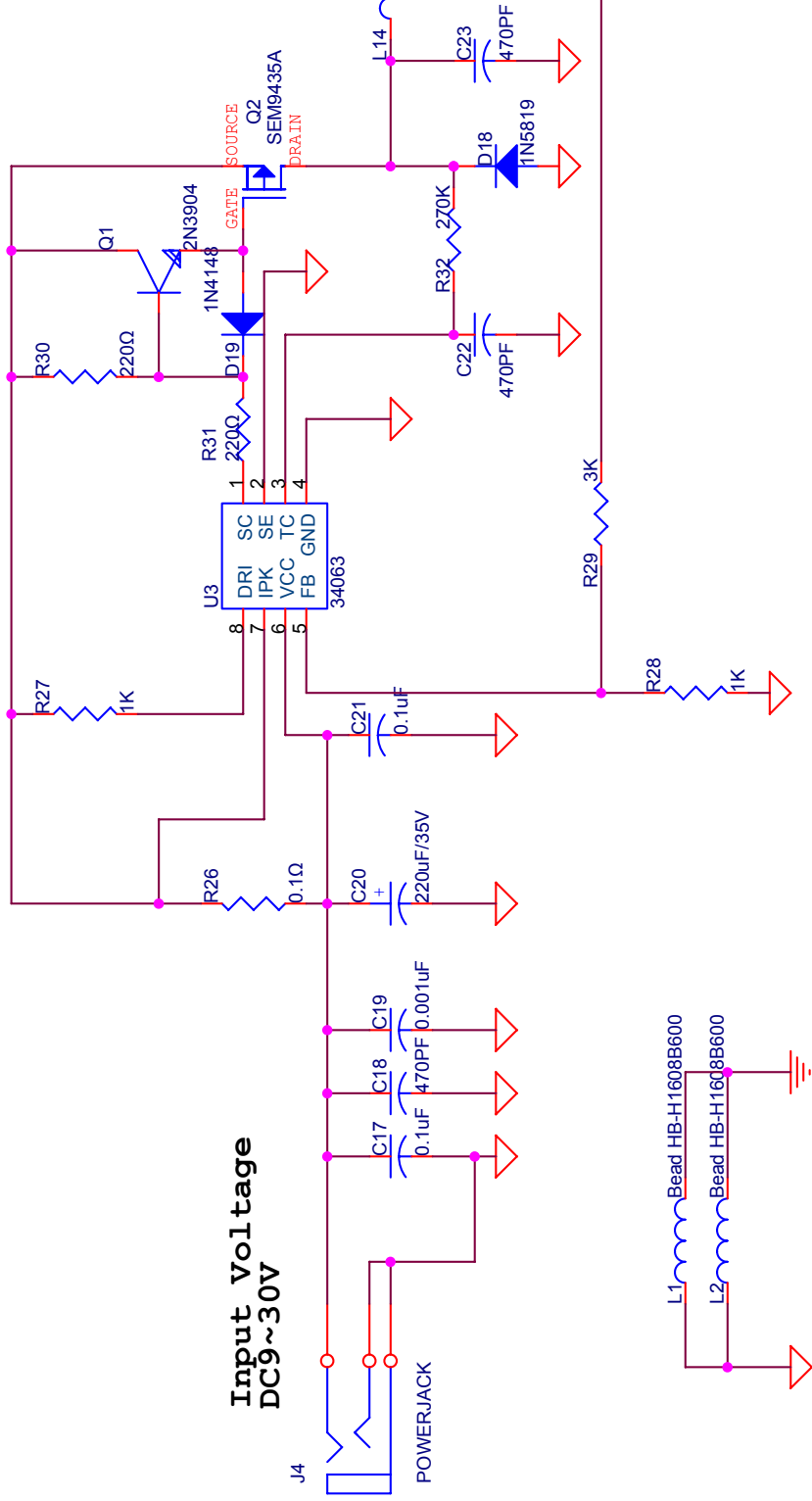
MOXA HWDC

Title
For NE-4120S

Size A Document Number
DIO

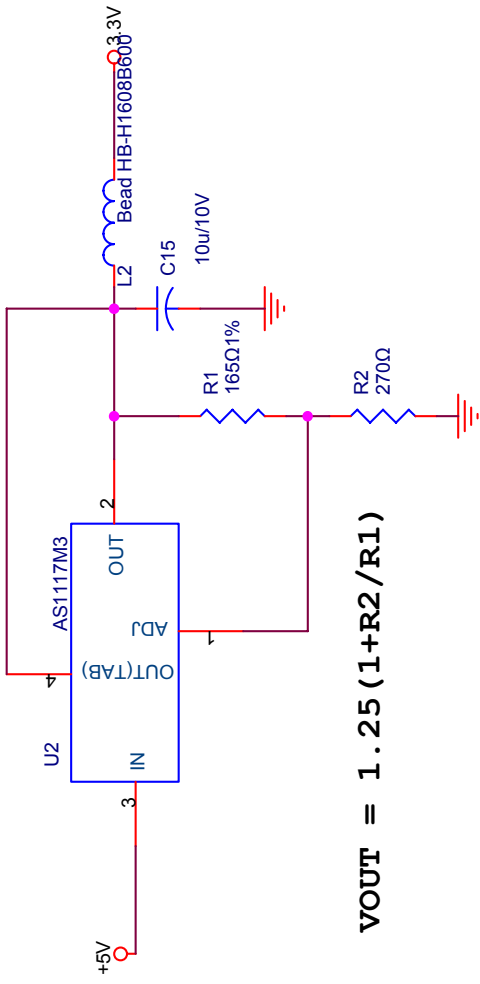
Date: 星期四, 五月 20, 2004

The switching regulator is for NE-4110A/S system power



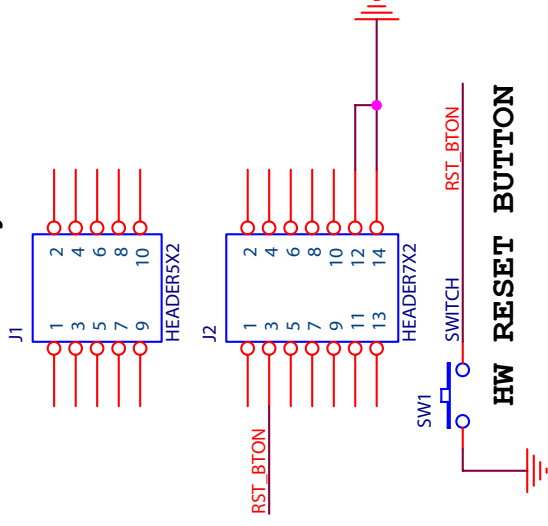
MOXA HWDC	
Title	For NE-4120S
Size	Document Number
A	Switching Regulator
Date:	星期四, 五月 20, 2004

This linear regulator is only for Ready LED to avoid radiating little light while it

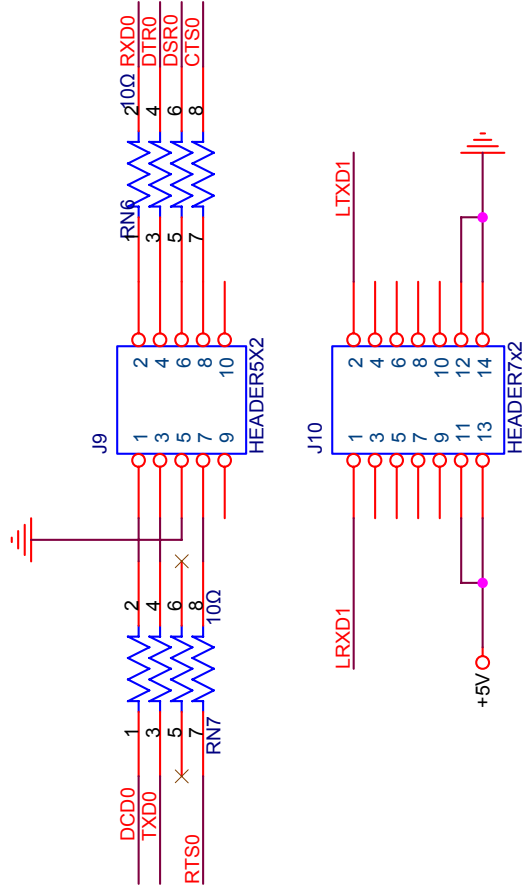


MOXA HWDC	
Title	For NE-4120S
Size	Document Number
A	Linear Regulator
Date:	星期四, 五月 20, 2004

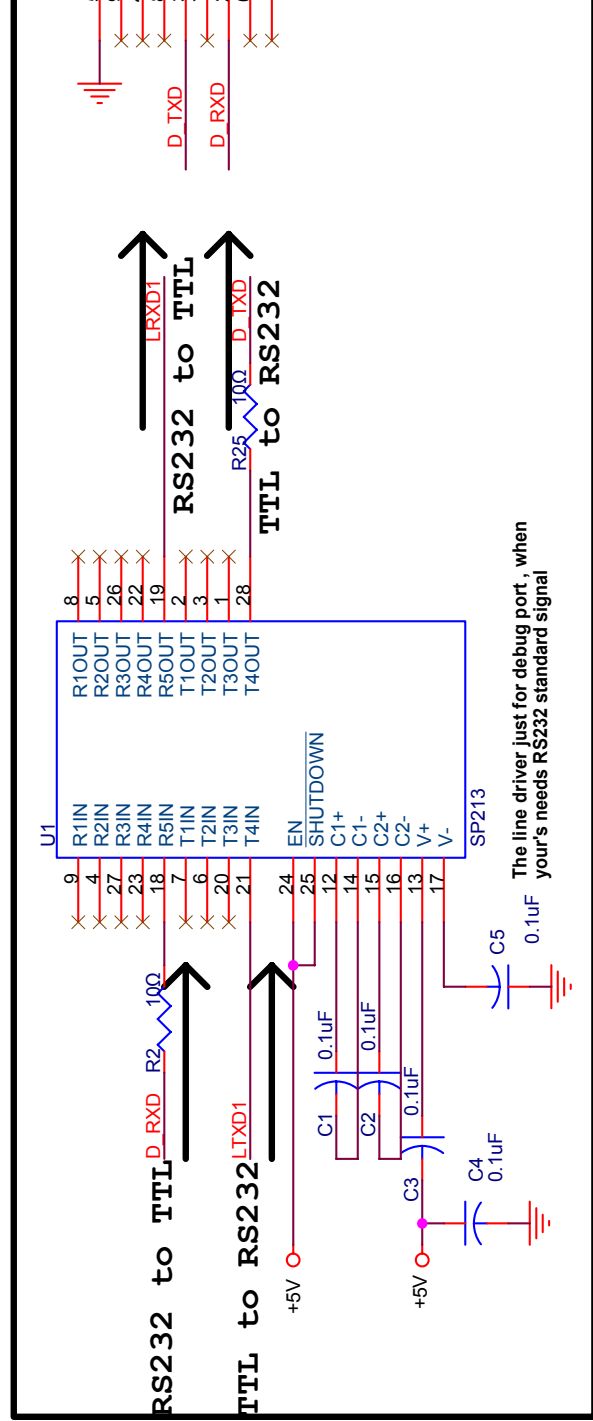
While push this button, the NE-4120A/S terminates all open immediately and restarts the system.



MOXA HWDC	
Title	For NE-4120S
Size	Document Number
A	Reset System
Date:	星期四, 五月 20, 2004

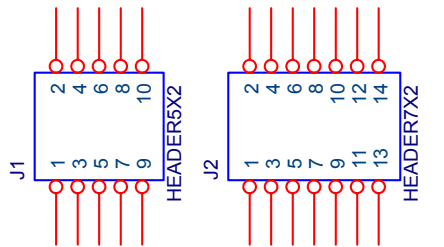


DTR0
CTS0
TXD0
RTS0
RXD0
DSR0
DCD0



D.TXD
D.RXD

MOXA HWDC	
Title	For NE-4120S
Size	Document Number
A	Line Driver & Conne
Date:	星期四, 五月 20, 2004



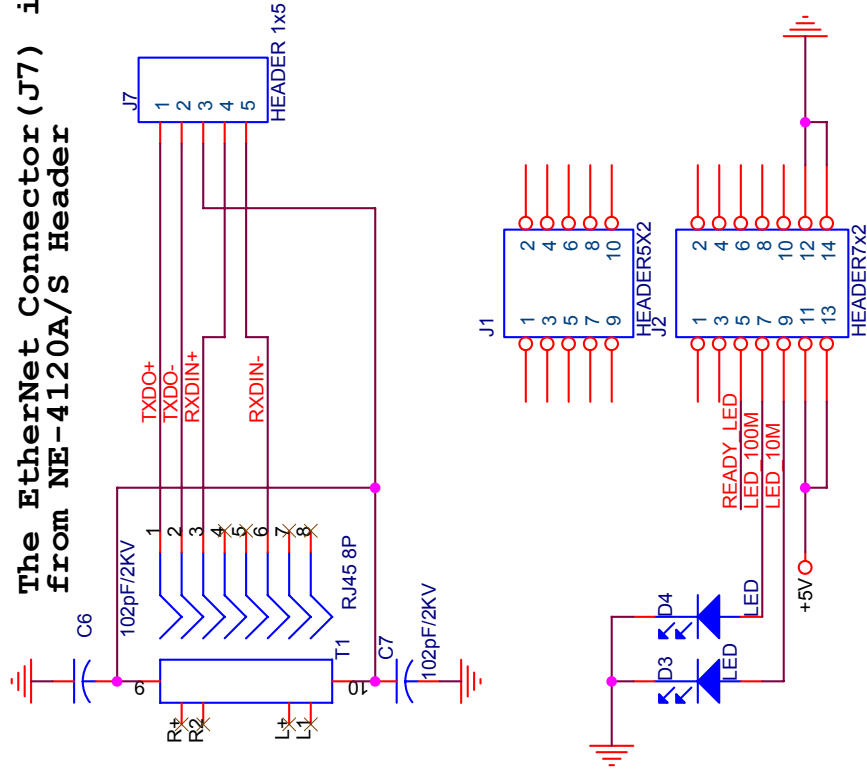
2.54x2.54 mm

MOXA HWDC	
Title	For NE-4120S
Size	Document Number
A	D10
Date:	星期四, 五月 20, 2004

2
3
4
5

2
3
4
5

The Ethernet Connector (J7) is wiring from NE-4120A/S Header



MOXA HWDC	
Title	For NE-4120S
Size	Document Number
A	EtherNet
Date:	星期四, 五月 20, 2004

